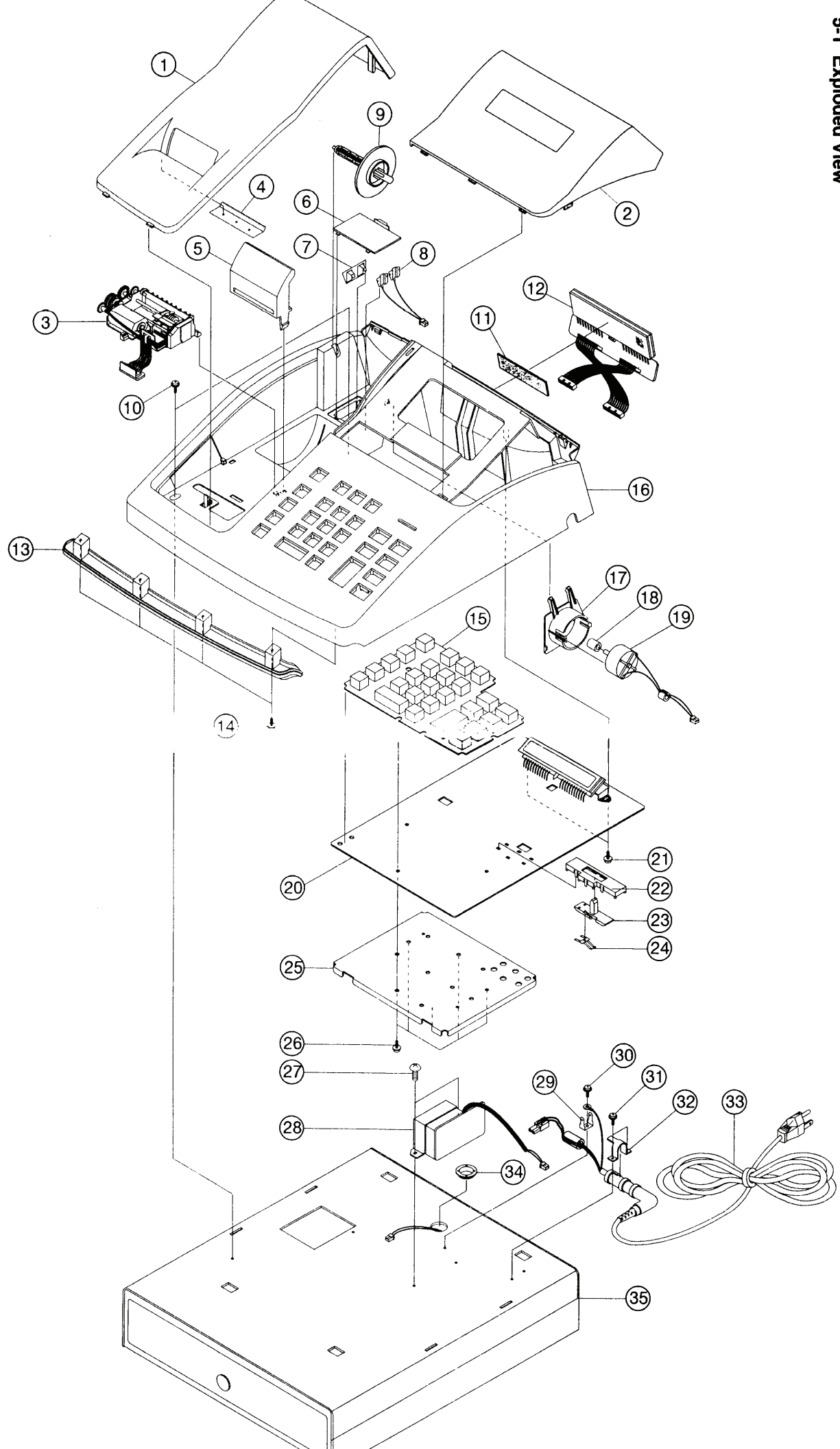


# 5 Exploded View and Parts List

## 5-1 Exploded View



## 5-2 Exploded Parts List

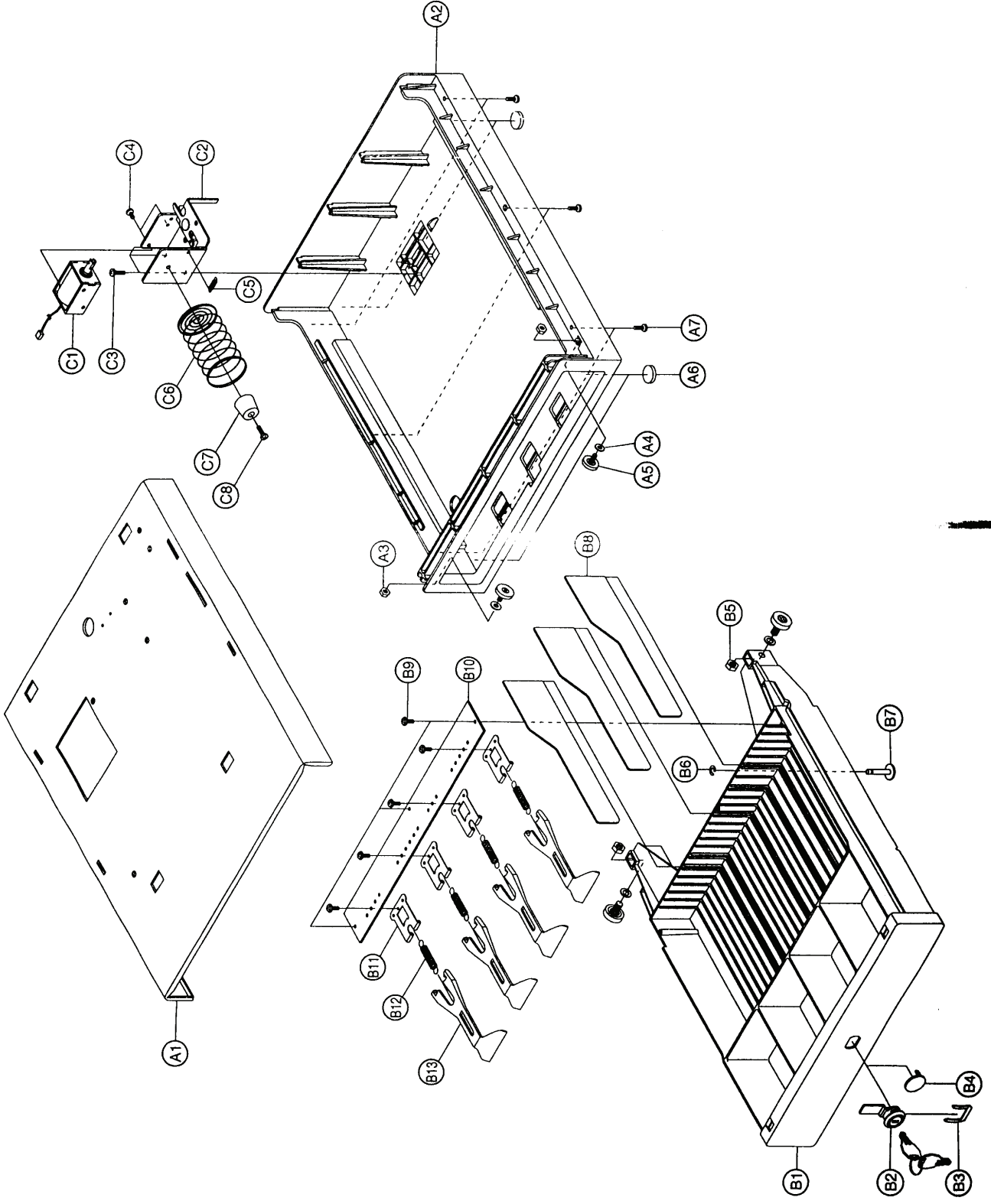
Loc. No.	Part Code	Description	Specification	Q'ty	Serviceable
1	JK72-40928A	COVER-PRINTER	ABS(V0)	1	Y
2	JK72-40929A	WINDOW-DISPLAY	PC	1	Y
	JK72-40929B	WINDOW-DISPLAY (R)	PC (REAR-DIS)	1	Y
3	JK96-00960A	ASSY-PRINTER	-	1	Y
4	JK70-10320A	CUTTER-PAPER	STS 304	1	Y
5	JK72-40930A	GUIDE-PAPER	ABS(V0)	1	Y
6	JK72-40931A	CASE-BATTERY	ABS(V0)	1	Y
7	JK70-10325A	PLATE-BATTERY / A	-	1	Y
8	JK70-10326A	PLATE-BATTERY / B	-	2	Y
9	JK72-60317A	PULLY-WINDING	ABS(V0)	1	Y
10	6003-000221	SCREW-TAPTITE	PWH,M4,L8	2	Y
11	JK73-10208A	RPR-PAD	RUBBER	1	Y
12	JK92-01021A	ASSY-REAR DISPLAY	-	1	Y
13	JK72-40927A	BASE-DUMMY	ABS(V0)	1	Y
14	6002-000175	SCREW-TAPPING	PWH,M3,L8	4	Y
15	JK73-20901A	KEY-MULT	RUBBER	1	Y
16	JK72-40926A	CASE-UPPER	ABS(V0)	1	Y
17	JK72-40932A	HOLDER-MOTOR	ABS(V0)	1	Y
18	JK73-60307A	ROLLER MOTOR	URETANE	1	Y
19	953 280032AA	MEP,MOTOR-ASS'Y	-	1	Y
20	JK92-00924A	MAIN-BOARD	U.S.A STD	1	Y
	JK92-00926A	MAIN-BOARD	Europe STD	1	Y
21	6002-000174	SCREW-TAPPING	PWH,M3,L10	2	Y
22	JK72-60353A	HOLDER S/W	ABS(V0)	1	Y
23	933 290073TA	SWITCH-SLIDE TOP	ACETAL	1	Y
24	JK70-10375A	TERMINAL	STS 304	1	Y
25	JK70-10374A	PLATE-MAIN/PCB	SECC,T1.0	1	Y
26	6002-000175	SCREW-TAPPING	PWH,M3,L8	4	Y
27	6002-000207	SCREW-TAPPING	RH,M4,L8	2	Y
28	JK26-30104C	TRANS-POWER	AC 110/120V	1	Y
	JK26-30104D	TRANS-POWER	AC 220/240V	1	Y
29	JK70-10376A	PLATE-TAB	STS 304	1	Y
30	6006-000196	SCREW-ASS'Y	WT,RH,M3,L10	1	Y
31	6002-000198	SCREW-TAPPING	RH,M3,L10	2	Y

32	JK70-10312A	HOLDER-CORD	SBHG,T1.0	1	Y
	JK39-10301C	POWER-CORD (AC 110/120V)	U.S.A STD	1	Y
33	JK39-10302C	POWER-CORD (AC 220/240V)	Europe STD	1	Y
	JK39-10301Y	POWER-CORD (AC 240V)	UK STD	1	Y
34	JK72-40345A	BUSHION-DRAWER	-	1	Y
35	JK75-10905A	DRAWER-ASS'Y	B44NC	1	Y

### 5-3 Turret (Rear Display) Assembly

Loc. No.	Code No.	Description	Specifications	Q'ty	Serviceable
B1	JK93-50044C	ASS'Y, TURRET-BODY	ER-100	1	Y
B2	JK72-40929B	WINDOW-DISPLAY	ER-150,DC	1	Y

**5-4 Drawer Assembly Exploded View**



## 5-5 Drawer Assembly

NO	PART NUMBER	DESCRIPTION / SPECIFICATION	Q'TY	Serviceable
A1	JK70-10907A	HOUSING-DRAWER : STEEL	1	Y
A2	JK72-60430A	COVER BOTTOM : HIPS HB	1	Y
A3	6021-000167	NUT HEX M6	2	Y
A4	6031-000243	WASHER PLAIN	2	Y
A5	JK72-60415A	ROLLER	2	Y
A6	JK73-60318A	RUBBER FOOT	4	Y
A7	6002-000193	SCREW(M3*6)	6	Y

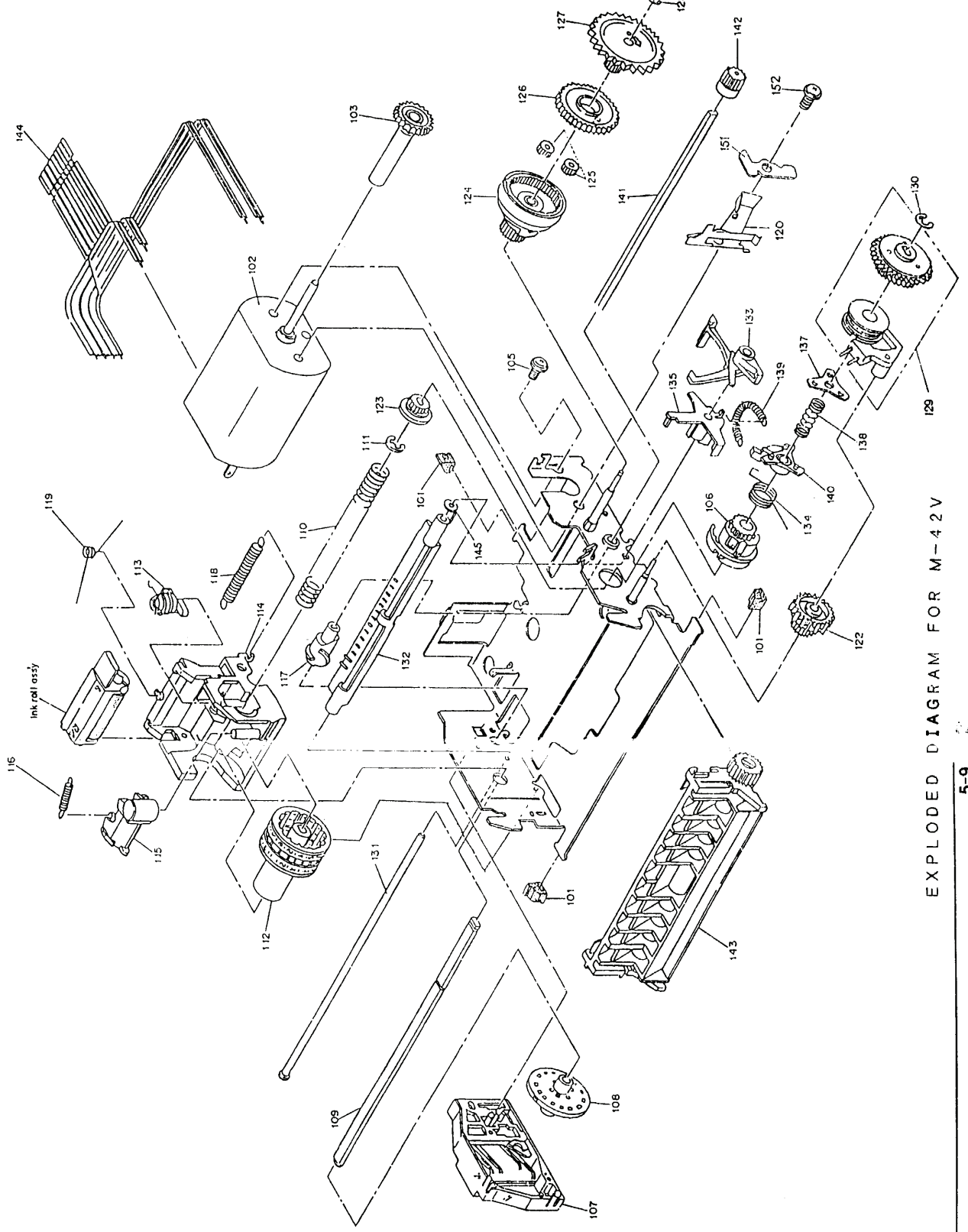
## 5-6 Bill Tray Assembly

NO	PART NUMBER	DESCRIPTION / SPECIFICATION	Q'TY	Serviceable
B1	JK72-60039A	TRAY BILL COIN : HIPS HB	1	Y
B2	JK75-10389A	LOCK KEY ( with LOCK )	1	Y
B3	JK70-10307A	PLATE CLIP ( with LOCK )	1	Y
B4	JK72-60322A	KEY BUSHING : HIPS HB ( without LOCK )	1	Y
B5	JK72-10415A	ROLLER	2	Y
B6	6031-000243	WASHER PLAIN	4	Y
B7	6021-000167	NUT HEX M6	2	Y
B8	6044-000124	E-RING	1	Y
B9	JK70-40302A	SHAFT LOCK	1	Y
B10	JK72-60037A	PARTITION BILL : HIPS HB	2,3	Y
B11	6002-000193	SCREW (TAP3*6)	6,7	Y
B12	JK70-10314A	PLATE-HOLDER	1	Y
B14	JK70-10314A	HOLDER LEVER PRESS	3,4	Y
B15	6107-000134	SPRING LEVER PRESS	3,4	Y
B16	JK72-60318A	LEVER PRESS : POM(BLACK)	3,4	Y

**5-7 Lock Assembly**

NO	PART NUMBER	DESCRIPTION / SPECIFICATION	Q'TY	Serviceable
C1	925 380009AA	SOLENOID ASSY	1	Y
C2	811 390003A	BRK'T-LOCK ASSY	1	Y
	JK70-10328A	LEVER-LOCK	1	Y
	JK70-40309A	SHAFT-RIVET	1	Y
C3	6002-000201	SCREW (M4*12)	3	Y
C4	6001-000677	SCREW, MACHINE,M3x6	2	Y
C5	831 522004AB	SPRING LEVER LOCK	1	Y
C6	6107-000126	SPRING PUSH	1	Y
C7	JK73-60317A	RUBBER BUMPER	1	Y
C8	6001-000702	SCREW (M4*15)	1	Y

5-8 Printer Assembly Exploded View



EXPLODED DIAGRAM FOR M-42V

**5-9 Printer Assembly**

Loc. No.	Part Code	Description / Specification	Q'ty	Serviceable
101	JK81-10994A	AS-RUBBER FITTING (F801001050)	1	Y
102	JK81-10995A	AS-MOTOR (F816051010)	1	Y
103	JK81-10996A	AS-MOTOR GEAR (F817051010)	1	Y
105	JK81-10997A	AS-CUP SCREW (B040352118)	1	Y
106	JK81-10998A	AS-P/F GEAR ASSY (F815101000)	1	Y
107	JK81-10999A	AS-DETECTOR ASSY (F815151000)	1	Y
108	JK81-11000A	AS-DETECTION WHEEL (F808152010)	1	Y
109	JK81-11001A	AS-PRINT WHEEL SHAFT (1017190)	1	Y
110	JK81-11002A	AS-PRT WHEEL SPRING (F801202020)	1	Y
111	JK81-11003A	AS-RETAINING RING (B150300311)	1	Y
112	JK81-11004A	AS-P/WHEEL ASSY 1-6 (M817001060)	1	Y
113	JK81-11005A	AS-H/TRAN LEVER ASSY (F815210000)	1	Y
114	JK81-11006A	AS-CARRIAGE (F817208010)	1	Y
115	JK81-11007A	AS-HAMMER (F809201020)	1	Y
116	JK81-11008A	AS-HAMMER RET/SPRING (F808201020)	1	Y
117	JK81-11009A	AS-PRINT CAM (F817201020)	1	Y
118	JK81-11010A	AS-CARRIAGE SPRING (F812201020)	1	Y
119	JK81-11011A	AS-INK ROLL SPRING (F817201010)	1	Y
120	JK81-11012A	AS-SELE PAWL SPRING (F818209010)	1	Y
122	JK81-11013A	AS-P/F TRANS GEAR (F815212010)	1	Y
123	JK81-11014A	AS-P/F RATCHET WHEEL (F801202030)	1	Y
124	JK81-11015A	AS-PRT CHA OVER CAM (F815215010)	1	Y
125	JK81-11016A	AS-PLANET GEAR (F801206020)	1	Y
126	JK81-11017A	AS-SEL DRIVE GEAR (F801206030)	1	Y
127	JK81-11018A	AS-REDUCTION GEAR (F817203010)	1	Y
128	JK81-11019A	AS-RETAINING RING (B150300212)	1	Y
129	JK81-11020A	AS-COIL S/GEAR ASSY (F818230000)	1	Y
130	JK81-11021A	AS-RETAINING RING (B150300311)	1	Y
131	JK81-11022A	AS-POSITIONING SHAFT (F806206010)	1	Y
132	JK81-11023A	AS-POSITIONING PLATE (F808205010)	1	Y
133	JK81-11024A	AS-SELECTING RATCHET (F804204010)	1	Y
134	JK81-11025A	AS-TRIGGER L/SPRING (F803204020)	1	Y
135	JK81-11026A	AS-RETURN LEVER (F815207010)	1	Y
137	JK81-11027A	AS-TRIGGER PLATE (F801205100)	1	Y



5 Exploded View and Parts List

138	JK81-11028A	AS-TRIGGER PLATE SPR (F801205110)	1	Y
139	JK81-11029A	AS-RETURN LEVER SPR (F810205020)	1	Y
140	JK81-11030A	AS-TRIGGER LEVER (F801205060)	1	Y
141	JK81-11031A	AS-PRINT SHAFT (1017209)	1	Y
142	JK81-11032A	AS-CARRIAGE F/GEAR (F801211020)	1	Y
143	JK81-11033A	AS-PLATEN ASSY (1024287)	1	Y
144	JK81-11034A	AS-JUMPER WIRE (1018148)	1	Y
145	JK81-11035A	AS-PLAIN WASHER (F817210010)	1	Y
151	JK81-11036A	AS-S/PAWL SPR HOLDER (F818202020)	1	Y
152	JK81-11037A	AS-CUP SCREW (B040351111)	1	Y

Note: ( ) means the Printer Manufacture`s Parts List ( EPSON`s Parts List )