

POS 7" GD Quick Start Guide

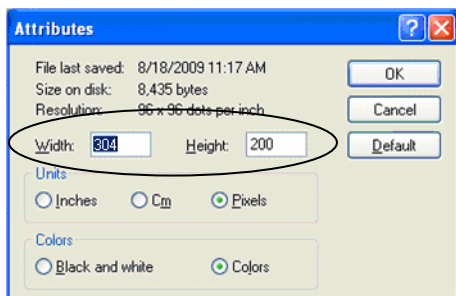
Before getting started, you will need...

1. An SD card (CRS P/N 520004, 512MB) to store the images you wish to display on the picture frame portion of the display.
2. An SD card reader/writer for your PC (CRS P/N 520002). You will need to copy the images you wish to display to the SD card.
3. A graphic software tool that you are familiar with using. You may need to resize images and convert them to JPEG format. Microsoft Paint™ is a suitable tool.

SAM4s Models Supported: ER-285M, ER-380M, ER-390M, ER-5115II, ER-650 Series, ER-5200M Series, SER-7000 Series, SPS-2000, SPS-500 Series Hybrid ECRs

A. Load Slide Show Images

1. Format the SD Card to **FAT32**.
2. Use color **JPEG** images.
3. The optimum image size is:
304 (w) x 200 (h) pixels.
4. Use Microsoft Paint, or another graphic software tool to resize your image if necessary. From Paint, choose *Attributes* from the *Image* menu to display the *Attributes* dialog box. Set size as required. If the image was another graphic format, be sure to “save as” in JPEG format.



5. Copy images to root of the SD card. Use a clean SD card—delete unnecessary files and folders.
Note: Images will display in alphabetical order by file name.
6. Insert SD card in slot on left-rear of display frame.



B. Connect the ECR

1. At the ECR, configure the selected port for **EPSON POLE DISPLAY** (refer to the appropriate program manual.)
2. Set port parameters to **9600 BAUD, 8-data bits, 1-stop bit and parity NONE**.
3. Connect the RJ45 connector from the POS 7" GD to the appropriate RS232C port on ECR.
4. Connect the power adaptor to a 120v AC outlet; connect the adaptor the power connection of the Y-cable coming from the POS 7" GD display.
5. The digital frame will scroll through images at approximate 10 second intervals. Transaction information will display in a fixed format on the right-side of the screen.

POS GD 7" FAQ

Q: How can I best describe the functions of the POS 7" GD?

A: Think of the POS 7" GD as a combination of a digital picture frame and a mini order confirmation board. The picture frame portion of the POS 7" GD will run a slide show of the jpeg images on the SD card and the confirmation board will display the transaction as each item is entered.

Q: Can I change the order in which the images are displayed?

A: Yes. Images will display in alphabetical order by file name, however all files must be loaded on the SD at the same time. If you add a new image directly to the SD, it will be added at the "end of the line" regardless of its name. If you wish place the new image in alphabetical order, you must first clear the SD of all images, and then add all of the images, including the new one, in from another folder.

Q: Can I adjust the format of the screen?

A: No. The format is fixed. The image is displayed on the left side of the screen and the transaction information is displayed on the right-side.

Q: Can I adjust the timing of the image changes?

A: No. Each image will display for about 10 seconds before changing.

Q: When connected to an SPS-2000 or SPS-5X0, the POS 7" GD is displaying the subtotal after each item. Why?

Q: What will display when using the POS 7"GD in a guest check environment?

A: Only newly posted items will display. Recalled items do not display.

A: P Mode System Option/Validation/Subtotal Option #8 "Display Running Subtotal on Pole" is set to **Yes**. Change this option to **No**.

Q: Are there any other mounting options?

A: VESA mounting holes, located on the back of the display, allow the display to be mounted on VESA-standard mounts.

Q: What is the purpose of the USB port on the display?

A: There currently is no function for this port.

Q: Can the POS 7" GD be purchased with a DB9 style RS232C connector.

A: No. For connecting to ECRs with only DB9 ports, you must use an adaptor (such as CRS P/N 202763, Modular Adaptor, DB9/RJ45)